

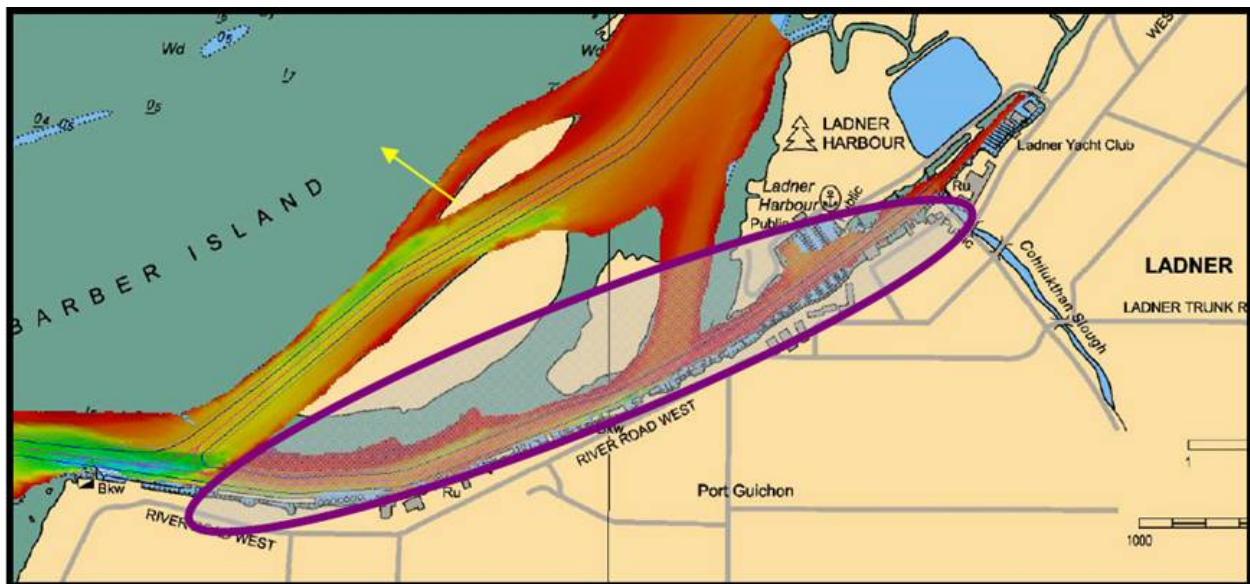


## NOTICE OF DREDGING – LADNER HARBOUR LOCAL CHANNEL

Port Metro Vancouver is pleased to announce, on behalf of its funding partners the Provincial Government and the Corporation of Delta, that channel dredging in the Ladner Harbour Local Channel will be done in two stages and will commence on January 27, 2014 for a duration of 7 weeks. Dredging will resume after the freshet in July 2014 and continue until November.

The Ladner Harbour Local Channel dredging project is intended to re-establish navigation channel design (depth and width). The channel to be dredged ranges from the confluence of Ladner Reach and Ladner Harbour channel in the west to the Elliot St. wharf in the east. Approximately 210,000 cubic metres of river bottom is to be removed by clamshell dredging and disposed by barge to Pt. Grey disposal site.

The re-establishment of this Local Channel will promote sustainable economic and environmental revitalization of the harbour and waterfront.



**PROJECT DURATION:** January 27<sup>th</sup> – March 15<sup>th</sup> and July - November  
07:00 – 17:00 (Weekdays)

**CONTRACTOR:** Vancouver Pile Driving Ltd  
Chris Paterson, Project Manager  
Direct Line: 604 990 0405  
Email: [cpaterson@vanpile.com](mailto:cpaterson@vanpile.com)